



## Summer Bike Ride & Reception

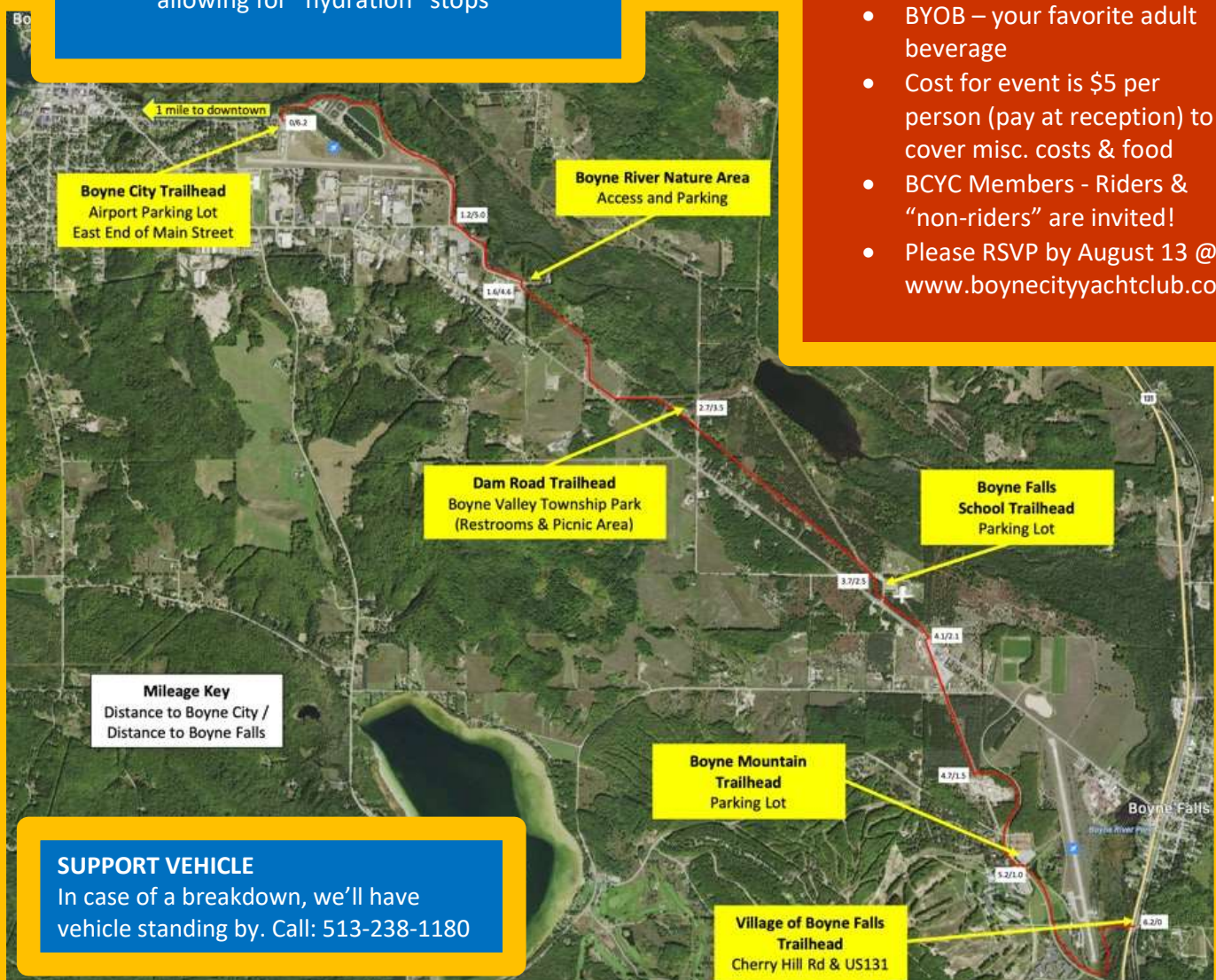
### THE RIDE

- Saturday, August 15<sup>th</sup> @ 3pm
- Ride departs Boyne Valley Trailway trailhead located at end of Main St. in Boyne City (see map below)
- Car parking at BC Airport (see signs)
- Overview by Mike Sheean, a principal driver to this multi-million dollar project
- Scenic ride - smooth and flat paved trail suitable for all bike skills follows Boyne River & retraces the route of Boyne City, Gaylord & Alpena Railroad. INFO: <http://www.boynevalleyrailway.org/welcome.html>
- Ride goes past Boyne Mtn., then turns around at trail end at Hwy 131.
- Total round-trip ride is 12.3 miles and will take approximately 90 minutes allowing for “hydration” stops



### THE RECEPTION

- Post-ride Pizza RECEPTION at the MARINA picnic area (lighthouse) in Veterans Park from 4:30p – 6p
- BYOB – your favorite adult beverage
- Cost for event is \$5 per person (pay at reception) to cover misc. costs & food
- BCYC Members - Riders & “non-riders” are invited!
- Please RSVP by August 13 @ [www.boynecityyachtclub.com](http://www.boynecityyachtclub.com)



### SUPPORT VEHICLE

In case of a breakdown, we'll have vehicle standing by. Call: 513-238-1180